

# Model/Le modèle: 548036

- Please check your product packaging to make sure the included accessories are in the “list of standard accessories”. If any parts are missing, please contact your local dealer immediately.

- Do not allow any sharp objects to come in contact with the cabinet, as it will scratch the surface.

- Continuous and prolonged exposure to direct sunlight may cause discoloration to the wood.

- Do not put any hot appliances directly on or near the cabinet.

- Please avoid using cleaning products that contain bleach or ammonia.

- Wood surfaces should only be cleaned with wood care products such as soapy water or furniture polish.

- Vérifiez l'emballage de votre produit SVP pour assurer que les accessoires fournis sont dans la liste des accessoires standards".

- S'il manque des pièces, veuillez contacter immédiatement votre distributeur sur place.

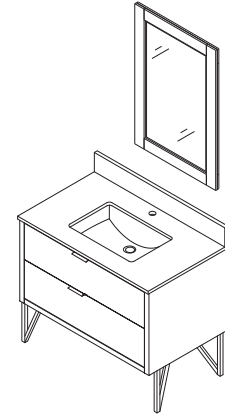
- Les objets pointus sont interdits de toucher le meuble, car ils gratteront le surface.

- L'exposition continue directement sous le soleil peut provoquer une décoloration du bois.

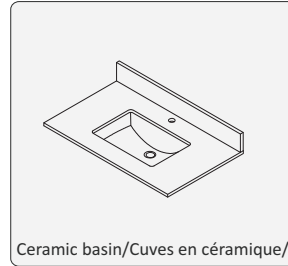
- Ne placez aucune chose chaude directement sur la table ou à côté du meuble.

- N'utilisez pas des produits de nettoyage qui content de l'eau de javel ni de l'ammoniac.

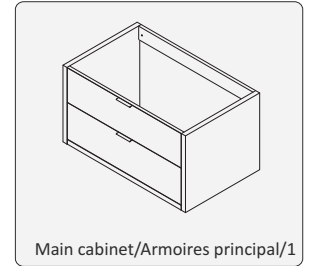
- Les surfaces ne doivent être nettoyées qu'avec produits d'entretien du bois ou de l'eau savonneuse ou vernis pour meubles.



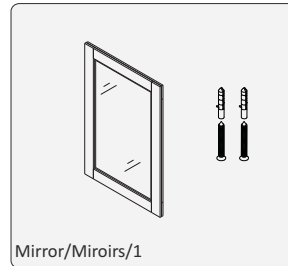
## Main Body Parts/La partie principale du corps



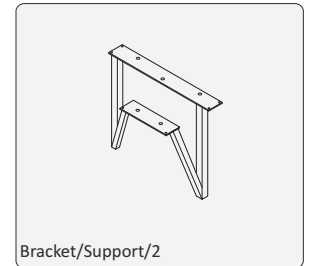
Ceramic basin/Cuves en céramique/1



Main cabinet/Armoires principal/1

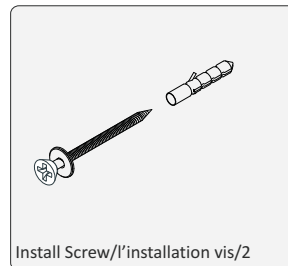


Mirror/Miroirs/1



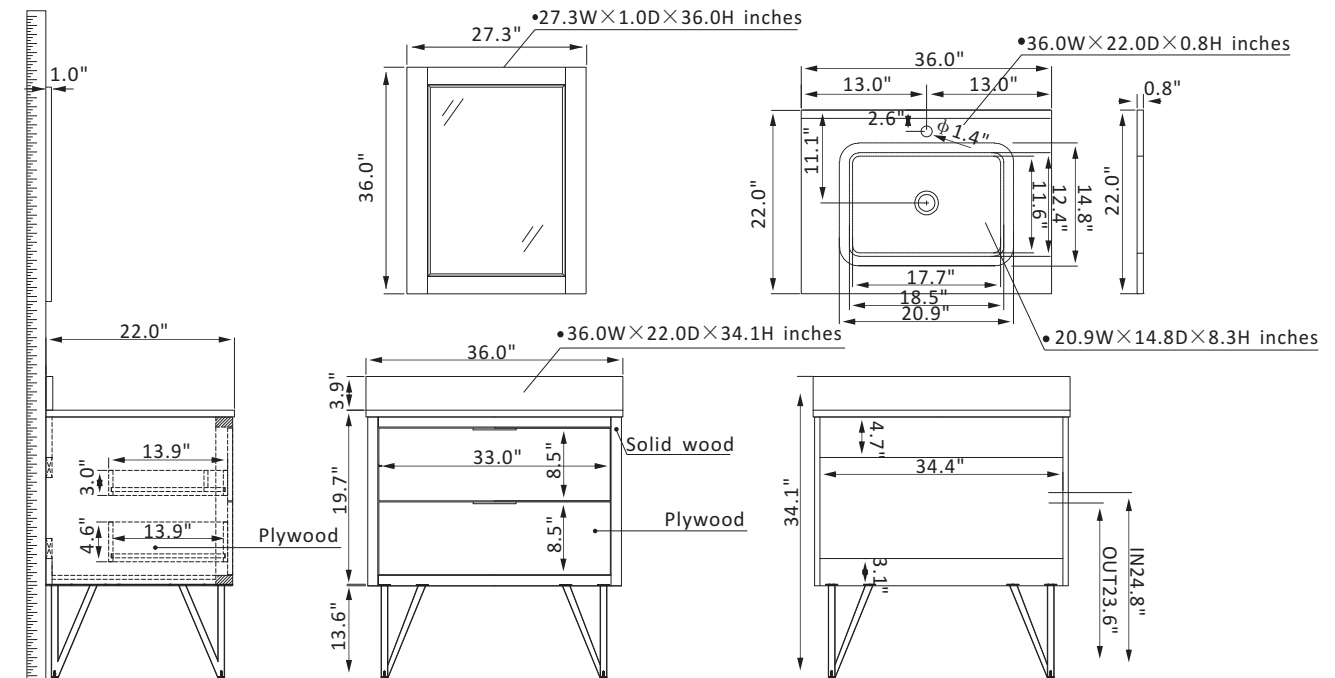
Bracket/Support/2

## Installation Parts/Partie d'installation

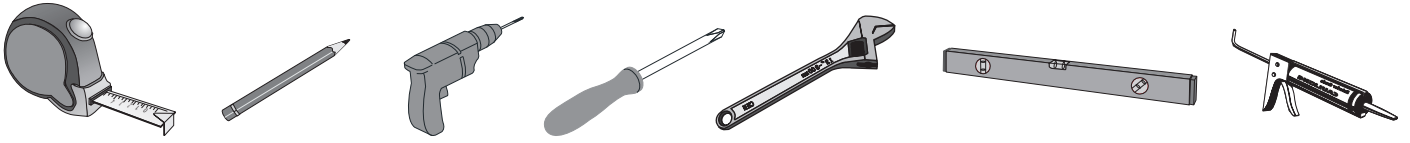


Install Screw/l'installation vis/2

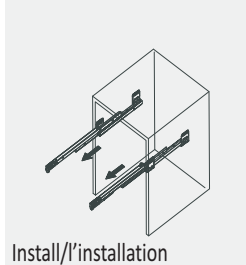
## Installation/l'installation



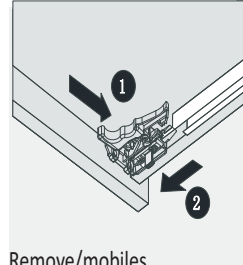
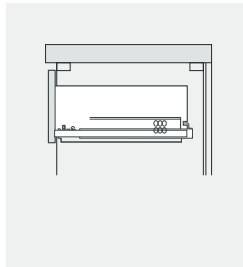
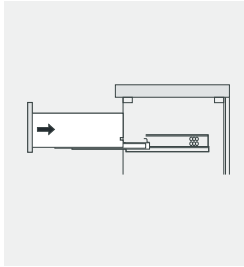
## Erecting Tool/Outils d'assemblage



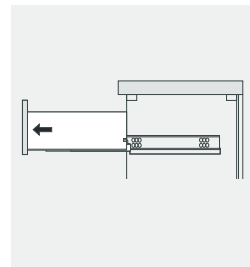
### Installation Instruction/Instructions d'installation



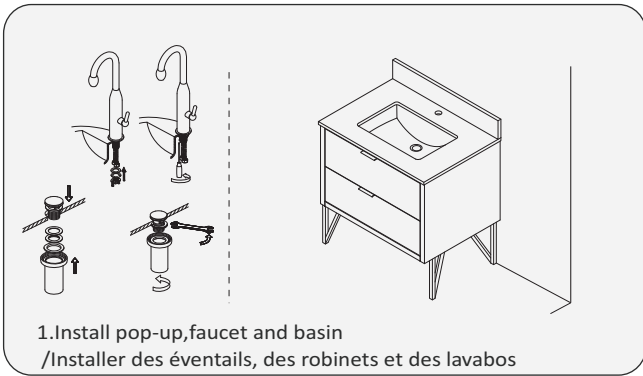
Install/l'installation



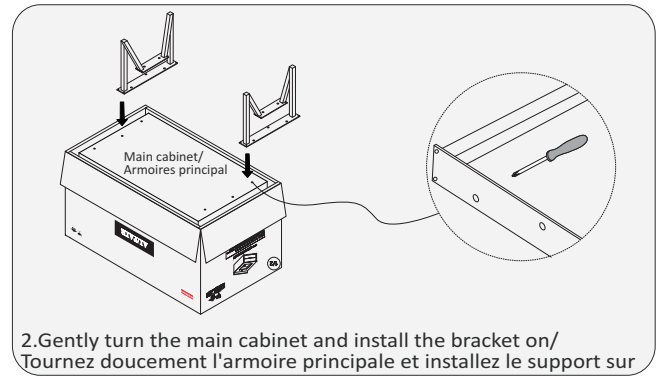
Remove/mobiles



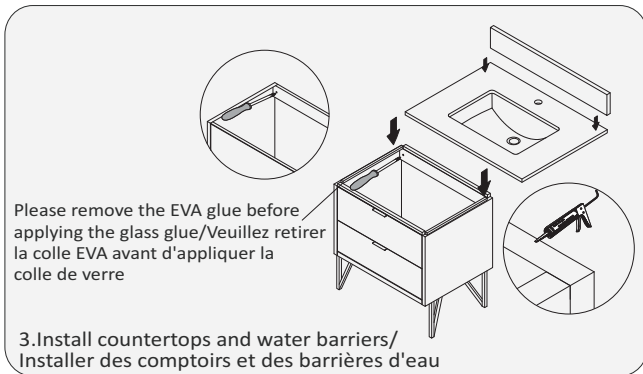
### Drawer Adjust/ tiroir ajuster



1. Install pop-up, faucet and basin  
/Installer des éventails, des robinets et des lavabos

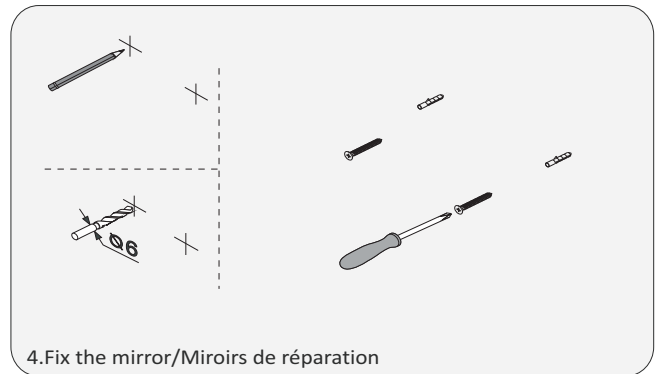


2. Gently turn the main cabinet and install the bracket on/  
Tournez doucement l'armoire principale et installez le support sur

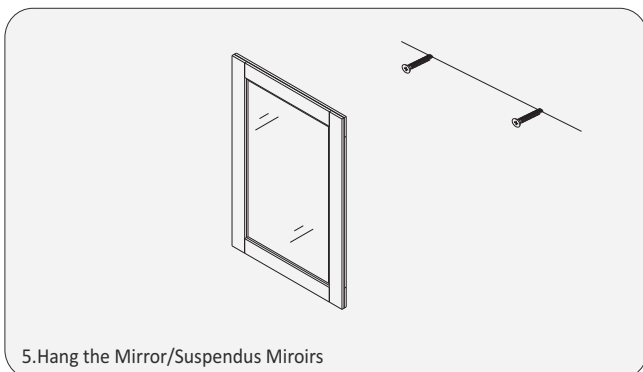


Please remove the EVA glue before applying the glass glue/Veuillez retirer la colle EVA avant d'appliquer la colle de verre

3. Install countertops and water barriers/  
Installer des comptoirs et des barrières d'eau



4. Fix the mirror/Miroirs de réparation



5. Hang the Mirror/Suspendus Miroirs